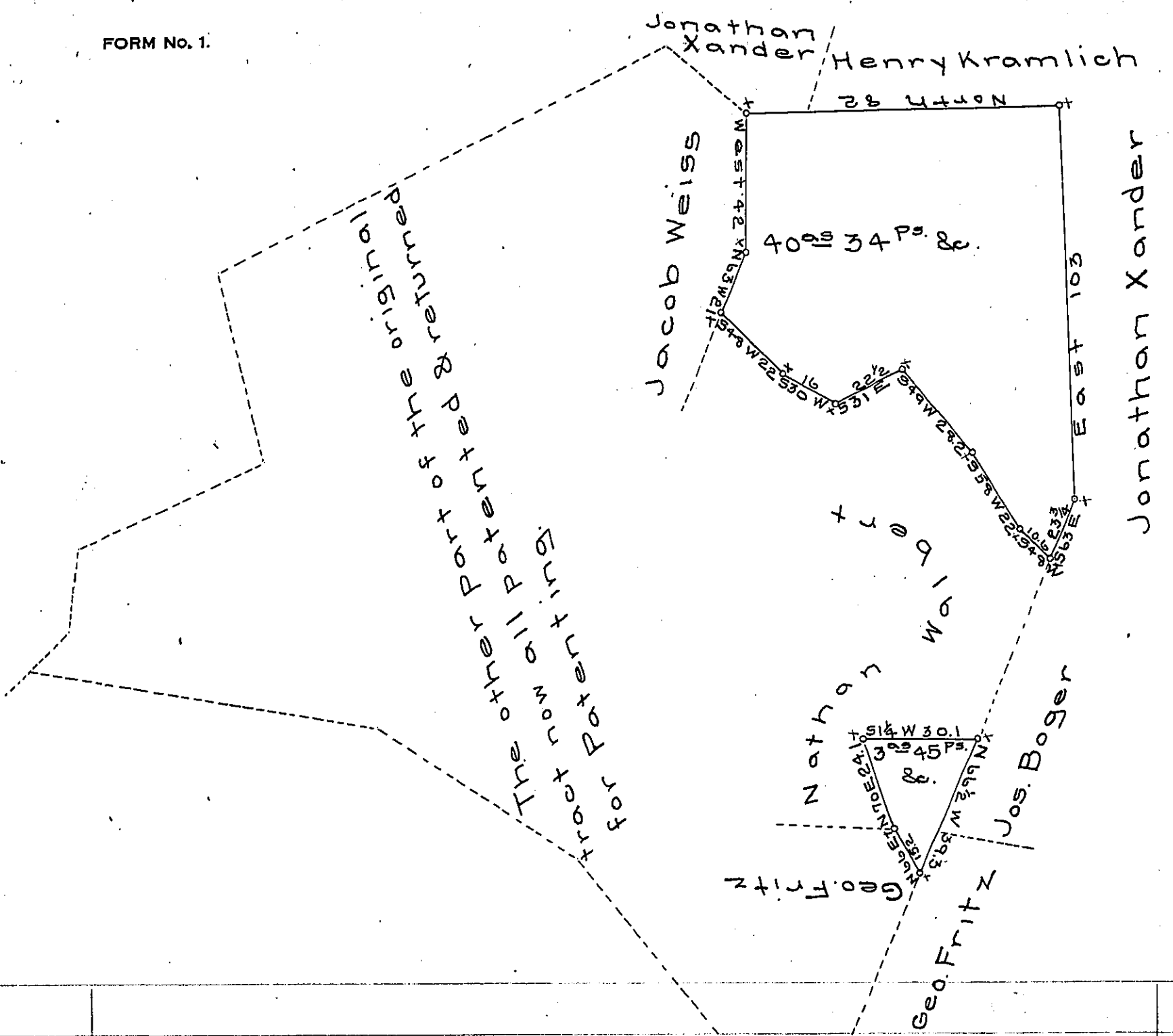


FORM No. 1.



Draft of two tracts of land situate in Weisenberg township Lehigh County the one containing 40<sup>os</sup> 34<sup>Ps</sup> and allowance and the other 3<sup>os</sup> 45<sup>Ps</sup> & allowance together 43<sup>os</sup> 79<sup>Ps</sup> and allowance of six percent &c. Being part of a larger tract of 225<sup>os</sup> &c surveyed on wt to Ludwig Riffle dated 29 January AD. 1753. Returned for Jonathan Xander, Charles F. Ihrie, Jonas Ebert ~~and~~ Henry Kramlich and John Fritz.

Geo. Blankens

To R. B. Beath Esq. }  
 Surveyor General }

*IN TESTIMONY* that the above is a copy of the original remaining on file in the Department of Internal Affairs of Pennsylvania, made conformably to an Act of Assembly approved the 16th day of February 1833, I have hereunto set my hand and caused the Seal of said Department to be affixed at Harrisburg, this twenty-seventh day of December 1906.

*Laic R. Brown*  
 Secretary of Internal Affairs.